

IN THE DISTRICT COURT OF THE FIFTH JUDICIAL DISTRICT OF THE
STATE OF IDAHO, IN AND FOR THE COUNTY OF TWIN FALLS

In Re CSRBA) PARTIAL DECREE PURSUANT TO I.R.C.P. 54(b)
Case No. 49576) FOR FEDERAL RESERVED
)
) WATER RIGHT NO. 94-09521A

NAME AND ADDRESS: UNITED STATES OF AMERICA ACTING THROUGH
USDA FOREST SERVICE
550 W FORT ST MSC 033
BOISE ID 83724

SOURCE: See Attachment 1, Column A TRIBUTARY: See Attachment 1, Column B

Sources are located on National Forest System Land in the Flat Creek-Middle North Fork Coeur d'Alene River subwatershed (HUC12 170103010401).

QUANTITY: The amount of water necessary to control and suppress forest fires.

PRIORITY DATE: 11/06/1906

POINT OF DIVERSION: See Attachment 1, Columns C through G

PURPOSE AND PERIOD OF USE:

PURPOSE OF USE	PERIOD OF USE
Administrative-Fire Suppression	01/01 - 12/31

PLACE OF USE: National Forests in Idaho and the Kaniksu, Lolo and Kootenai National Forests in Montana.

See Attachment 2.

OTHER PROVISIONS NECESSARY FOR DEFINITION OR ADMINISTRATION OF THIS WATER RIGHT:

This right is limited to the intermittent diversion and use of water for the purpose of suppressing wildfires. This water right shall not be used as a basis to prevent the future appropriation of water.

This partial decree is subject to such general provisions necessary for the definition of the rights or for the efficient administration of the water rights as may be ultimately determined by the Court at a point in time no later than the entry of a final unified decree. Idaho Code § 42-1412(6).

RULE 54(b) CERTIFICATE

With respect to the issues determined by the above partial judgment it is hereby CERTIFIED, in accordance with Rule 54(b), I.R.C.P., that the court has determined that there is no just reason for delay of the entry of a final judgment and that the court has and does hereby direct that the above partial judgment is a final judgment upon which execution may issue and an appeal may be taken as provided by the Idaho Appellate Rules.

Eric J. Wildman
Presiding Judge of the
Coeur d'Alene-Spokane River Adjudication

	A	B	C	D	E	F	G
1	SOURCE NAME	TO TRIBUTARY	TOWNSHIP	RANGE	SECTION	QQ	SURVEY CODE AND NUMBER
2	Flat Creek	North Fork Coeur d'Alene River	51N	02E	1		
3	Unnamed Stream	Flat Creek	51N	02E	1		
4	Unnamed Stream	Flat Creek	51N	02E	1		
5	Unnamed Stream	Flat Creek	51N	02E	1		
6	Unnamed Stream	Flat Creek	51N	02E	1		
7	Unnamed Stream	Flat Creek	51N	02E	1		
8	Unnamed Stream	Flat Creek	51N	02E	1		
9	Unnamed Stream	Flat Creek	51N	02E	1		
10	Flat Creek	North Fork Coeur d'Alene River	51N	02E	2		
11	Unnamed Stream	Flat Creek	51N	02E	2		
12	Unnamed Stream	Flat Creek	51N	02E	2		
13	Unnamed Stream	Flat Creek	51N	02E	2		
14	Unnamed Stream	Flat Creek	51N	02E	2		
15	Unnamed Stream	Flat Creek	51N	02E	2		
16	Unnamed Stream	Flat Creek	51N	02E	2		
17	Unnamed Stream	Flat Creek	51N	02E	2		
18	Flat Creek	North Fork Coeur d'Alene River	51N	02E	3		
19	Unnamed Stream	Flat Creek	51N	02E	3		
20	Unnamed Stream	Flat Creek	51N	02E	3		
21	Unnamed Stream	Flat Creek	51N	02E	3		
22	Unnamed Stream	Flat Creek	51N	02E	3		
23	Unnamed Stream	Flat Creek	51N	02E	3		
24	Unnamed Stream	Flat Creek	51N	02E	10		
25	Unnamed Stream	Flat Creek	51N	02E	10		
26	Unnamed Stream	Flat Creek	51N	02E	10		
27	Unnamed Stream	Flat Creek	51N	02E	11		
28	Unnamed Stream	Flat Creek	51N	02E	11		
29	Unnamed Stream	Flat Creek	51N	02E	11		
30	Unnamed Stream	Flat Creek	51N	02E	11		
31	Unnamed Stream	Flat Creek	51N	02E	11		
32	Svee Creek	Flat Creek	51N	02E	12		
33	Unnamed Stream	Flat Creek	51N	02E	12		
34	Unnamed Stream	Flat Creek	51N	02E	12		
35	Unnamed Stream	Svee Creek	51N	02E	12		
36	Svee Creek	Flat Creek	51N	02E	13		
37	Unnamed Stream	Svee Creek	51N	02E	13		
38	Unnamed Stream	Svee Creek	51N	02E	13		
39	Unnamed Stream	Flat Creek	51N	02E	14		
40	Unnamed Stream	Flat Creek	51N	02E	14		
41	Unnamed Stream	North Fork Coeur d'Alene River	51N	03E	3	NWNE	L 2
42	North Fork Coeur d'Alene River	Coeur d'Alene River	51N	03E	3	NWNW	
43	North Fork Coeur d'Alene River	Coeur d'Alene River	51N	03E	3	NWNW	L 3
44	Unnamed Stream	North Fork Coeur d'Alene River	51N	03E	3	SWNE	
45	Flat Creek	North Fork Coeur d'Alene River	51N	03E	4	NENE	L 1
46	Unnamed Stream	North Fork Coeur d'Alene River	51N	03E	4	NENW	L 3
47	Flat Creek	North Fork Coeur d'Alene River	51N	03E	4	NESE	
48	Flat Creek	North Fork Coeur d'Alene River	51N	03E	4	NESE	
49	Unnamed Stream	North Fork Coeur d'Alene River	51N	03E	4	NWNE	L 2
50	Unnamed Stream	North Fork Coeur d'Alene River	51N	03E	4	NWNW	L 4
51	Flat Creek	North Fork Coeur d'Alene River	51N	03E	4	NWSE	
52	Flat Creek	North Fork Coeur d'Alene River	51N	03E	4	NWSW	
53	Unnamed Stream	North Fork Coeur d'Alene River	51N	03E	4	SESE	
54	Flat Creek	North Fork Coeur d'Alene River	51N	03E	4	SESE	
55	Unnamed Stream	Flat Creek	51N	03E	4	SESE	
56	Flat Creek	North Fork Coeur d'Alene River	51N	03E	4	SWSE	
57	Unnamed Stream	Flat Creek	51N	03E	4	SWSE	
58	Unnamed Stream	Flat Creek	51N	03E	4	SWSW	
59	Flat Creek	North Fork Coeur d'Alene River	51N	03E	5		
60	Unnamed Stream	Flat Creek	51N	03E	5		
61	Unnamed Stream	Flat Creek	51N	03E	5		
62	Unnamed Stream	North Fork Coeur d'Alene River	51N	03E	5		
63	Flat Creek	North Fork Coeur d'Alene River	51N	03E	6		
64	Svee Creek	Flat Creek	51N	03E	6		
65	Unnamed Stream	Flat Creek	51N	03E	6		
66	Unnamed Stream	Flat Creek	51N	03E	6		
67	Unnamed Stream	Flat Creek	51N	03E	6		
68	Unnamed Stream	Flat Creek	51N	03E	6		
69	Svee Creek	Flat Creek	51N	03E	7		
70	Unnamed Stream	Svee Creek	51N	03E	7		
71	Unnamed Stream	Svee Creek	51N	03E	7		
72	Unnamed Stream	Flat Creek	51N	03E	8		
73	Unnamed Stream	Flat Creek	51N	03E	8		
74	Unnamed Stream	Flat Creek	51N	03E	8		
75	Unnamed Stream	Svee Creek	51N	03E	8		
76	North Fork Coeur d'Alene River	Coeur d'Alene River	51N	03E	9	NENE	
77	Unnamed Stream	North Fork Coeur d'Alene River	51N	03E	9	NENE	
78	Unnamed Stream	North Fork Coeur d'Alene River	51N	03E	9	NENE	L 1
79	Unnamed Stream	Flat Creek	51N	03E	9	NWNW	
80	Unnamed Stream	Flat Creek	51N	03E	9	NWSW	
81	Unnamed Stream	North Fork Coeur d'Alene River	51N	03E	9	SESE	
82	Unnamed Stream	North Fork Coeur d'Alene River	51N	03E	9	SESE	
83	Unnamed Stream	North Fork Coeur d'Alene River	51N	03E	9	SWSE	
84	Unnamed Stream	Flat Creek	51N	03E	9	SWSW	




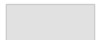

	A	B	C	D	E	F	G
1	SOURCE NAME	TO TRIBUTARY	TOWNSHIP	RANGE	SECTION	QQ	SURVEY CODE AND NUMBER
85	North Fork Coeur d'Alene River	Coeur d'Alene River	51N	03E	10	NWNW	
86	North Fork Coeur d'Alene River	Coeur d'Alene River	51N	03E	10	NWNW	L 2
87	North Fork Coeur d'Alene River	Coeur d'Alene River	51N	03E	10	NWNW	L 3
88	North Fork Coeur d'Alene River	Coeur d'Alene River	51N	03E	10	NWSW	
89	North Fork Coeur d'Alene River	Coeur d'Alene River	51N	03E	10	NWSW	L 4
90	Unnamed Stream	North Fork Coeur d'Alene River	51N	03E	16		
91	Unnamed Stream	Brett Creek	52N	02E	11		
92	Davy Creek	Senator Creek	52N	02E	12		
93	Senator Creek	North Fork Coeur d'Alene River	52N	02E	12		
94	Unnamed Stream	Brett Creek	52N	02E	12		
95	Unnamed Stream	Brett Creek	52N	02E	12		
96	Unnamed Stream	Brett Creek	52N	02E	12		
97	Unnamed Stream	Senator Creek	52N	02E	12		
98	Unnamed Stream	Senator Creek	52N	02E	12		
99	Unnamed Stream	Brett Creek	52N	02E	13		
100	Unnamed Stream	Brett Creek	52N	02E	13		
101	Unnamed Stream	Brett Creek	52N	02E	13		
102	Unnamed Stream	Brett Creek	52N	02E	13		
103	Unnamed Stream	Brett Creek	52N	02E	13		
104	Unnamed Stream	Brett Creek	52N	02E	14		
105	Unnamed Stream	Brett Creek	52N	02E	14		
106	Unnamed Stream	Brett Creek	52N	02E	14		
107	Unnamed Stream	Brett Creek	52N	02E	14		
108	Brett Creek	North Fork Coeur d'Alene River	52N	02E	22		
109	Unnamed Stream	Brett Creek	52N	02E	22		
110	Unnamed Stream	Brett Creek	52N	02E	22		
111	Brett Creek	North Fork Coeur d'Alene River	52N	02E	23		
112	Unnamed Stream	Brett Creek	52N	02E	23		
113	Unnamed Stream	Brett Creek	52N	02E	23		
114	Unnamed Stream	Brett Creek	52N	02E	23		
115	Unnamed Stream	Brett Creek	52N	02E	23		
116	Unnamed Stream	Brett Creek	52N	02E	23		
117	Unnamed Stream	Brett Creek	52N	02E	23		
118	Unnamed Stream	Brett Creek	52N	02E	23		
119	Brett Creek	North Fork Coeur d'Alene River	52N	02E	24		
120	Unnamed Stream	Brett Creek	52N	02E	24		
121	Unnamed Stream	Brett Creek	52N	02E	24		
122	Unnamed Stream	Brett Creek	52N	02E	24		
123	Unnamed Stream	Brett Creek	52N	02E	24		
124	Unnamed Stream	Brett Creek	52N	02E	24		
125	Unnamed Stream	Brett Creek	52N	02E	24		
126	Unnamed Stream	Miners Creek	52N	02E	24		
127	Miners Creek	North Fork Coeur d'Alene River	52N	02E	25		
128	Unnamed Stream	Miners Creek	52N	02E	25		
129	Unnamed Stream	Miners Creek	52N	02E	25		
130	Unnamed Stream	Miners Creek	52N	02E	25		
131	Unnamed Stream	Miners Creek	52N	02E	25		
132	Unnamed Stream	Miners Creek	52N	02E	25		
133	Unnamed Stream	Miners Creek	52N	02E	25		
134	Miners Creek	North Fork Coeur d'Alene River	52N	02E	26		
135	Unnamed Stream	Miners Creek	52N	02E	26		
136	Unnamed Stream	Miners Creek	52N	02E	26		
137	Unnamed Stream	Miners Creek	52N	02E	26		
138	Unnamed Stream	Miners Creek	52N	02E	26		
139	Unnamed Stream	Miners Creek	52N	02E	26		
140	Miners Creek	North Fork Coeur d'Alene River	52N	02E	27		
141	Unnamed Stream	Miners Creek	52N	02E	27		
142	Unnamed Stream	Miners Creek	52N	02E	27		
143	Flat Creek	North Fork Coeur d'Alene River	52N	02E	33		
144	Flat Creek	North Fork Coeur d'Alene River	52N	02E	34		
145	Unnamed Stream	Flat Creek	52N	02E	34		
146	Unnamed Stream	Miners Creek	52N	02E	34		
147	Unnamed Stream	Flat Creek	52N	02E	35		
148	Unnamed Stream	Flat Creek	52N	02E	35		
149	Unnamed Stream	Flat Creek	52N	02E	35		
150	Unnamed Stream	Flat Creek	52N	02E	35		
151	Unnamed Stream	Miners Creek	52N	02E	35		
152	Unnamed Stream	Miners Creek	52N	02E	35		
153	Unnamed Stream	Flat Creek	52N	02E	36		
154	Unnamed Stream	Miners Creek	52N	02E	36		
155	Unnamed Stream	Miners Creek	52N	02E	36		
156	Unnamed Stream	Cinnamon Creek	52N	03E	3		
157	Unnamed Stream	Cinnamon Creek	52N	03E	3		
158	Unnamed Stream	Cinnamon Creek	52N	03E	3		
159	Cinnamon Creek	North Fork Coeur d'Alene River	52N	03E	4		
160	Unnamed Stream	Cinnamon Creek	52N	03E	4		
161	Unnamed Stream	Cinnamon Creek	52N	03E	4		
162	Unnamed Stream	Cinnamon Creek	52N	03E	4		
163	Unnamed Stream	Cinnamon Creek	52N	03E	4		
164	Unnamed Stream	Cinnamon Creek	52N	03E	4		
165	Unnamed Stream	Cinnamon Creek	52N	03E	4		
166	Spion Kop Creek	North Fork Coeur d'Alene River	52N	03E	5		
167	Unnamed Stream	North Fork Coeur d'Alene River	52N	03E	5		

	A	B	C	D	E	F	G
1	SOURCE NAME	TO TRIBUTARY	TOWNSHIP	RANGE	SECTION	QQ	SURVEY CODE AND NUMBER
168	Unnamed Stream	North Fork Coeur d'Alene River	52N	03E	5		
169	North Fork Coeur d'Alene River	Coeur d'Alene River	52N	03E	6		
170	Senator Creek	North Fork Coeur d'Alene River	52N	03E	6		
171	Chute Creek	Senator Creek	52N	03E	7		
172	Davy Creek	Senator Creek	52N	03E	7		
173	Lion Creek	North Fork Coeur d'Alene River	52N	03E	7		
174	North Fork Coeur d'Alene River	Coeur d'Alene River	52N	03E	7		
175	President Creek	North Fork Coeur d'Alene River	52N	03E	7		
176	Senator Creek	North Fork Coeur d'Alene River	52N	03E	7		
177	Unnamed Stream	North Fork Coeur d'Alene River	52N	03E	7		
178	Cinnamon Creek	North Fork Coeur d'Alene River	52N	03E	8		
179	Lion Creek	North Fork Coeur d'Alene River	52N	03E	8		
180	North Fork Coeur d'Alene River	Coeur d'Alene River	52N	03E	8		
181	Spion Kop Creek	North Fork Coeur d'Alene River	52N	03E	8		
182	Stony Creek	North Fork Coeur d'Alene River	52N	03E	8		
183	Unnamed Stream	Cinnamon Creek	52N	03E	8		
184	Unnamed Stream	Cinnamon Creek	52N	03E	8		
185	Unnamed Stream	North Fork Coeur d'Alene River	52N	03E	8		
186	Unnamed Stream	North Fork Coeur d'Alene River	52N	03E	8		
187	Unnamed Stream	North Fork Coeur d'Alene River	52N	03E	8		
188	Unnamed Stream	North Fork Coeur d'Alene River	52N	03E	8		
189	Unnamed Stream	North Fork Coeur d'Alene River	52N	03E	8		
190	Unnamed Stream	North Fork Coeur d'Alene River	52N	03E	8		
191	Cinnamon Creek	North Fork Coeur d'Alene River	52N	03E	9		
192	Stony Creek	North Fork Coeur d'Alene River	52N	03E	9		
193	Unnamed Stream	Cinnamon Creek	52N	03E	9		
194	Unnamed Stream	Cinnamon Creek	52N	03E	9		
195	Unnamed Stream	Cinnamon Creek	52N	03E	10		
196	Unnamed Stream	Cinnamon Creek	52N	03E	10		
197	Gold Creek	North Fork Coeur d'Alene River	52N	03E	15		
198	Unnamed Stream	Gold Creek	52N	03E	15		
199	Swift Creek	North Fork Coeur d'Alene River	52N	03E	16		
200	Taft Creek	North Fork Coeur d'Alene River	52N	03E	16		
201	Unnamed Stream	Taft Creek	52N	03E	16		
202	Wilson Creek	North Fork Coeur d'Alene River	52N	03E	16		
203	North Fork Coeur d'Alene River	Coeur d'Alene River	52N	03E	17		
204	President Creek	North Fork Coeur d'Alene River	52N	03E	17		
205	Stony Creek	North Fork Coeur d'Alene River	52N	03E	17		
206	Swift Creek	North Fork Coeur d'Alene River	52N	03E	17		
207	Taft Creek	North Fork Coeur d'Alene River	52N	03E	17		
208	Unnamed Stream	President Creek	52N	03E	17		
209	President Creek	North Fork Coeur d'Alene River	52N	03E	18		
210	Unnamed Stream	Brett Creek	52N	03E	18		
211	Brett Creek	North Fork Coeur d'Alene River	52N	03E	19		
212	North Fork Coeur d'Alene River	Coeur d'Alene River	52N	03E	19		
213	Nowhere Creek	North Fork Coeur d'Alene River	52N	03E	19		
214	Unnamed Stream	Brett Creek	52N	03E	19		
215	Unnamed Stream	Brett Creek	52N	03E	19		
216	Unnamed Stream	Miners Creek	52N	03E	19		
217	Debbs Creek	North Fork Coeur d'Alene River	52N	03E	20		
218	Gold Creek	North Fork Coeur d'Alene River	52N	03E	20		
219	North Fork Coeur d'Alene River	Coeur d'Alene River	52N	03E	20		
220	Wilson Creek	North Fork Coeur d'Alene River	52N	03E	20		
221	Big Hank Creek	North Fork Coeur d'Alene River	52N	03E	21		
222	Debbs Creek	North Fork Coeur d'Alene River	52N	03E	21		
223	Gold Creek	North Fork Coeur d'Alene River	52N	03E	21		
224	Wilson Creek	North Fork Coeur d'Alene River	52N	03E	21		
225	Big Hank Creek	North Fork Coeur d'Alene River	52N	03E	22		
226	Debbs Creek	North Fork Coeur d'Alene River	52N	03E	22		
227	Gold Creek	North Fork Coeur d'Alene River	52N	03E	22		
228	Unnamed Stream	Big Hank Creek	52N	03E	22		
229	Unnamed Stream	Gold Creek	52N	03E	22		
230	Unnamed Stream	Big Hank Creek	52N	03E	23		
231	Little Canyon Creek	North Fork Coeur d'Alene River	52N	03E	26		
232	Unnamed Stream	Little Canyon Creek	52N	03E	26		
233	Unnamed Stream	Little Canyon Creek	52N	03E	26		
234	Little Canyon Creek	North Fork Coeur d'Alene River	52N	03E	27		
235	Unnamed Stream	Big Hank Creek	52N	03E	27		
236	Unnamed Stream	Little Canyon Creek	52N	03E	27		
237	Unnamed Stream	Little Canyon Creek	52N	03E	27		
238	Big Hank Creek	North Fork Coeur d'Alene River	52N	03E	28		
239	North Fork Coeur d'Alene River	Coeur d'Alene River	52N	03E	28		
240	Unnamed Stream	Big Hank Creek	52N	03E	28		
241	Unnamed Stream	North Fork Coeur d'Alene River	52N	03E	28		
242	Bennett Creek	North Fork Coeur d'Alene River	52N	03E	29		
243	Big Hank Creek	North Fork Coeur d'Alene River	52N	03E	29		
244	Debbs Creek	North Fork Coeur d'Alene River	52N	03E	29		
245	Miners Creek	North Fork Coeur d'Alene River	52N	03E	29		
246	North Fork Coeur d'Alene River	Coeur d'Alene River	52N	03E	29		
247	Miners Creek	North Fork Coeur d'Alene River	52N	03E	30		
248	Unnamed Stream	Miners Creek	52N	03E	30		
249	Unnamed Stream	Miners Creek	52N	03E	30		
250	Unnamed Stream	Miners Creek	52N	03E	30		

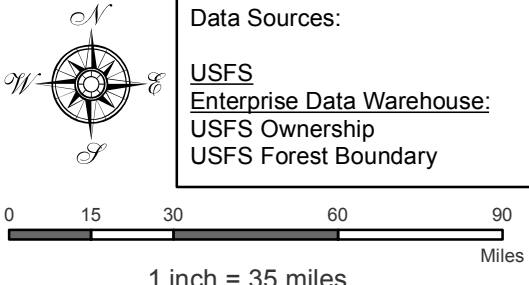
	A	B	C	D	E	F	G
1	SOURCE NAME	TO TRIBUTARY	TOWNSHIP	RANGE	SECTION	QQ	SURVEY CODE AND NUMBER
251	Unnamed Stream	Miners Creek	52N	03E	30		
252	Bennett Creek	North Fork Coeur d'Alene River	52N	03E	31		
253	Unnamed Stream	Flat Creek	52N	03E	31		
254	Unnamed Stream	Flat Creek	52N	03E	31		
255	Bennett Creek	North Fork Coeur d'Alene River	52N	03E	32		
256	Unnamed Stream	Cardinal Creek	52N	03E	32		
257	Unnamed Stream	Flat Creek	52N	03E	32		
258	Unnamed Stream	North Fork Coeur d'Alene River	52N	03E	32		
259	Cardinal Creek	North Fork Coeur d'Alene River	52N	03E	33		
260	Emery Creek	North Fork Coeur d'Alene River	52N	03E	33		
261	North Fork Coeur d'Alene River	Coeur d'Alene River	52N	03E	33		
262	Unnamed Stream	North Fork Coeur d'Alene River	52N	03E	33		
263	Unnamed Stream	North Fork Coeur d'Alene River	52N	03E	33		
264	Emery Creek	North Fork Coeur d'Alene River	52N	03E	34		
265	Little Canyon Creek	North Fork Coeur d'Alene River	52N	03E	34		
266	North Fork Coeur d'Alene River	Coeur d'Alene River	52N	03E	34		
267	Unnamed Stream	Little Canyon Creek	52N	03E	34		
268	Unnamed Stream	Little Canyon Creek	52N	03E	34		
269	Unnamed Stream	Little Canyon Creek	52N	03E	34		
270	Unnamed Stream	Little Canyon Creek	52N	03E	34		
271	Unnamed Stream	Little Canyon Creek	52N	03E	35		
272	Unnamed Stream	Little Canyon Creek	52N	03E	35		
273	Spion Kop Creek	North Fork Coeur d'Alene River	53N	03E	32		
274	Cinnamon Creek	North Fork Coeur d'Alene River	53N	03E	33		
275	Spion Kop Creek	North Fork Coeur d'Alene River	53N	03E	33		
276	Unnamed Stream	Cinnamon Creek	53N	03E	33		
277	Unnamed Stream	Cinnamon Creek	53N	03E	33		
278	Unnamed Stream	Cinnamon Creek	53N	03E	33		
279	Unnamed Stream	Cinnamon Creek	53N	03E	33		
280	Unnamed Stream	Cinnamon Creek	53N	03E	34		
281	Unnamed Stream	Cinnamon Creek	53N	03E	34		
282	Unnamed Stream	Cinnamon Creek	53N	03E	34		
283	Unnamed Pond	Sink	52N	03E	8		

Attachment 2
 Place of Use Map Fire Suppression - Water Right No. 94-09521A
 National Forests in Idaho and the Kaniksu, Lolo and Kootenai NF in Montana

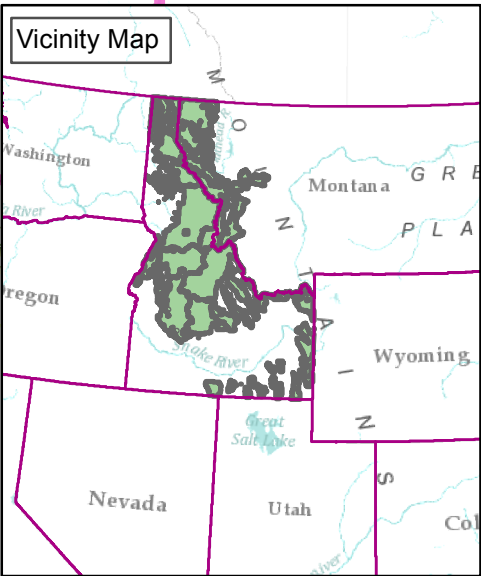
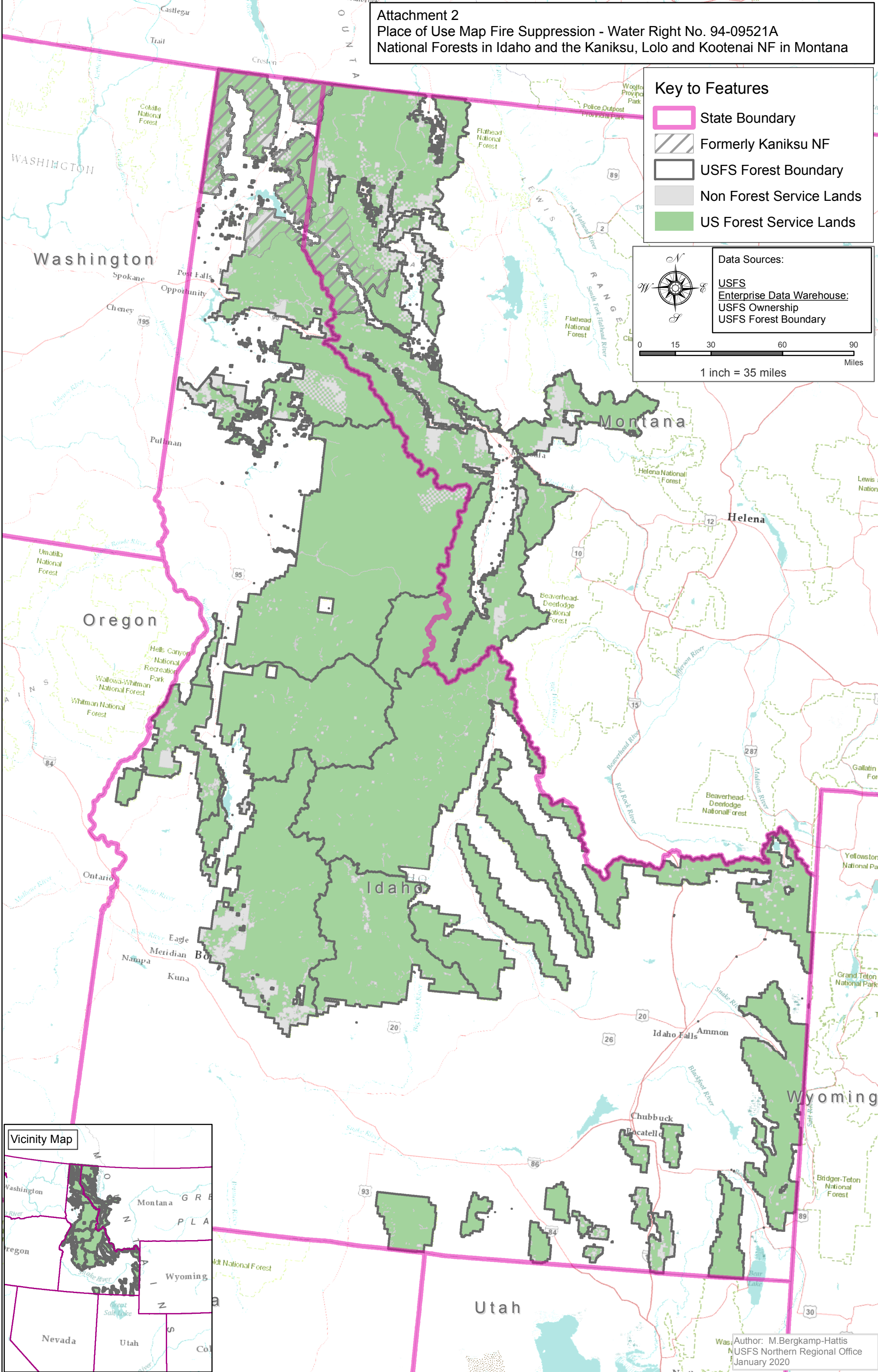
Key to Features

-  State Boundary
-  Formerly Kaniksu NF
-  USFS Forest Boundary
-  Non Forest Service Lands
-  US Forest Service Lands

Data Sources:
 USFS
 Enterprise Data Warehouse:
 USFS Ownership
 USFS Forest Boundary



0 15 30 60 90
 Miles
 1 inch = 35 miles



Author: M.Bergkamp-Hattis
 USFS Northern Regional Office
 January 2020